

INSTALLATION MICROPHONES

FM-CO13

OMNI-DIRECTIONAL FLUSH MOUNT CONDENSER MICROPHONE

The FM-CO13 is a wide range condenser microphone with an omni-directional polar pattern. It is designed for unobtrusive table, ceiling, or panel-mount applications when high quality sound reinforcement is required. It's ideal for teleconferencing, professional recording, television, and other demanding sound applications.

Rubber isolators are included with each microphone for optimal mechanical isolation from the mounting surface.

The FM-CO13 features a frequency response of 20 to 20,000 Hz. It has a self-contained power module and operates from an external 9V to 52V DC Phantom Power source.

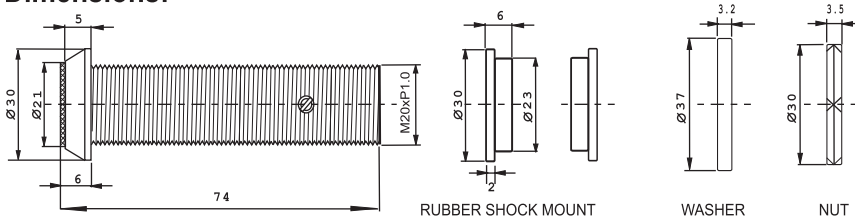
Output is low impedance balanced. The balanced signal appears across Pins 2 and 3, while the ground (shield) connection is Pin 1. Output is absolute polarity so that positive acoustic pressure produces positive voltage at Pin 2 in accordance with the industry standard.



FM-CO13

- Condenser/Omni
- 20-20kHz
- Sensitivity-64dB
- 1 1/4" X 2 3/4"

Dimensions:



Top View

Specifications:

Element.....Back Element Condenser (WATER-RESISTANT)
Polar Pattern.....Omni-directional
Frequency Response.....20 - 20,000 Hz
Sensitivity.....-52dB +/- 3dB (0dB=1V/microbar at 1kHz)
Impedance.....250 ohms
Operating Voltage.....9 - 52V

Specifications subject to change without notice.



MAKERS OF THE ORIGINAL
HOT SPOT PERSONAL MONITOR

601 E. Pawnee Wichita, KS 67211 316. 263.2852 FAX 316.263.0642 www.galaxyaudio.com
Distributed outside the United States by E and E Exports, Inc. 2815 Junipero Ave. Suite 101Signal Hill, CA 92614
562.988.3447 FAX 562.989.3037
Distributed in Canada by Audio Distributors International (ADI) 1275 Newton, unit 6 Boucherville, QC J4B 5H2 Canada
450.449.8177 FAX 450.449.8180

INSTALLATION MICROPHONES

FM-CC13

CARDIOID FLUSH MOUNT CONDENSER MICROPHONE

The FM-CC13 is a wide range condenser microphone with a uni-directional polar pattern. It is designed for unobtrusive table, ceiling, or panel-mount applications when high quality sound reinforcement is required. It's ideal for tele-conferencing, professional recording, television, and other demanding sound applications.

Rubber isolators are included with each microphone for optimal mechanical isolation from the mounting surface.

The FM-CC13 features a frequency response of 40 to 20,000 Hz. It has a self-contained power module and operates from an external 9V to 52V DC Phantom Power source.

Output is low impedance balanced. The balanced signal appears across Pins 2 and 3, while the ground (shield) connection is Pin 1. Output is absolute polarity so that positive acoustic pressure produces positive voltage at Pin 2 in accordance with the industry standard.

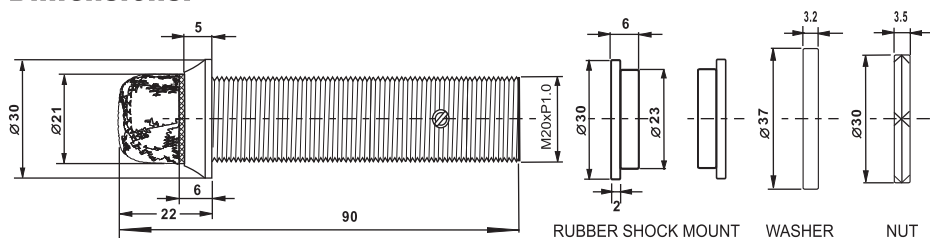
FM-CC13

- Condenser/Cardioid
- 40-20kHz
- Sensitivity-65dB
- Tilt Mesh Grille
- 1 1/4" X 3 1/2"



Top View

Dimensions:



Specifications:

Element.....Back Element Condenser (WATER RESISTANT)
Polar Pattern.....Uni-directional (Cardioid)
Frequency Response....40 - 20,000 Hz
Sensitivity.....-65dB +/- 3dB (0dB=1V/microbar at 1kHz)
Impedance.....250 ohms
Operating Voltage.....9 - 52V

Specifications subject to change without notice.



MAKERS OF THE ORIGINAL
HOT SPOT PERSONAL MONITOR

601 E. Pawnee Wichita, KS 67211 316. 263.2852 FAX 316.263.0642 www.galaxyaudio.com
Distributed outside the United States by E and E Exports, Inc. 2815 Junipero Ave. Suite 101 Signal Hill, CA 92614
562.988.3447 FAX 562.989.3037
Distributed in Canada by Audio Distributors International (ADI) 1275 Newton, unit 6 Boucherville, QC J4B 5H2 Canada
450.449.8177 FAX 450.449.8180