

# PC Port Setting Instructions

## PC Port Setting Instructions

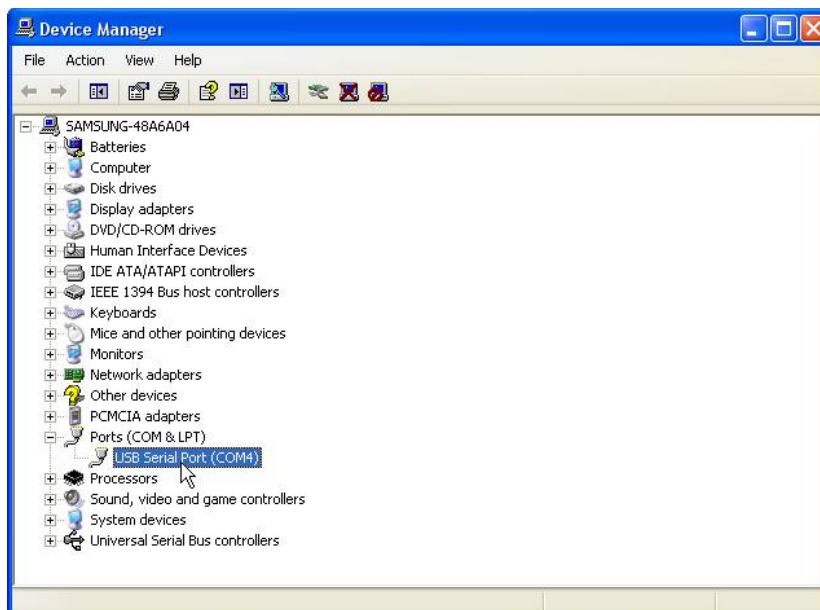
**I. Determine Connection Type (USB/RS232/RS485):** turn on the device and press 'UTILITY' to enter the main menu. Rotate NAV/PM1 until 'Interface Utilities' appears, press 'ENTER' to enter the 'INTERFACE UTILITY' sub-menu. Choose 'Interface Setup' and press 'ENTER' to enter the 'Interface Setup' sub-menu. Use 'PM2' or 'PM3' to choose the connection type, then confirm with 'ENTER'. (After confirmation, the selected option screen will show an asterisk "\*" eg: Source:USB \* ). Use 'ESC' to exit this page.

## II. PC Port and SW Connection Setting:

1. Turn on device, using the proper cable (USB, RS232, RS485) and connect the device to the PC. Follow these steps to check the COM port.  
Click the right mouse button on "My computer" and choose properties > Choose Hardware > Choose Device Manager > Choose Ports. (See pictures 1 and 2)

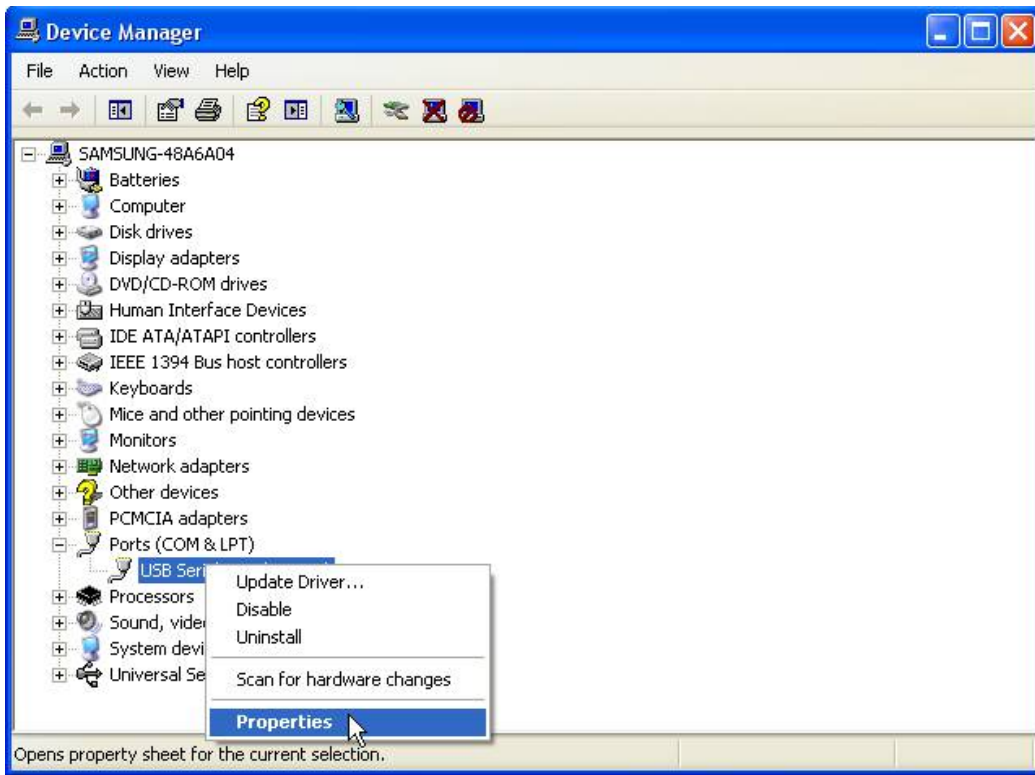


Picture 1

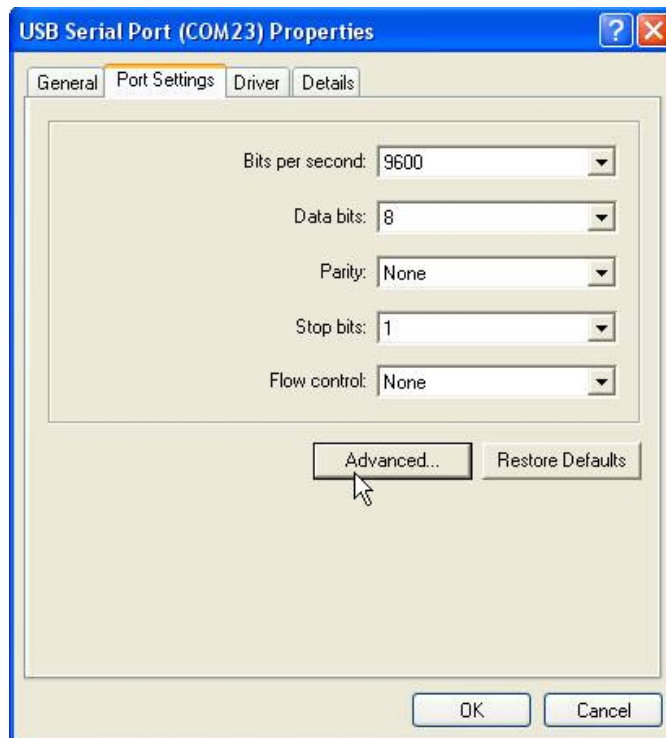


Picture 2

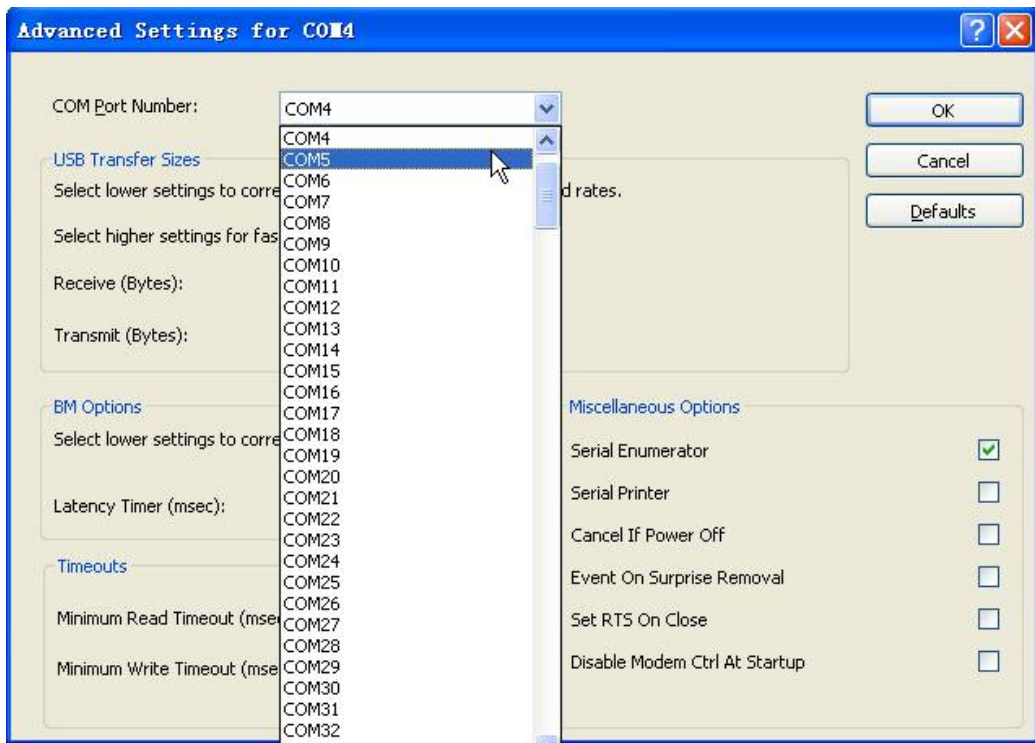
2. Check the COM number [eg, picture 2: USB Serial Port (COM4)]. If the number is > 16, click the right mouse button on the “USB Serial Port (COM\*\*)” icon > select Properties > select Port Settings > Select Advanced... > Select COM Port Number to choose a number which is smaller than 16. (eg. pictures 3, 4, 5)



Picture 3



Picture 4

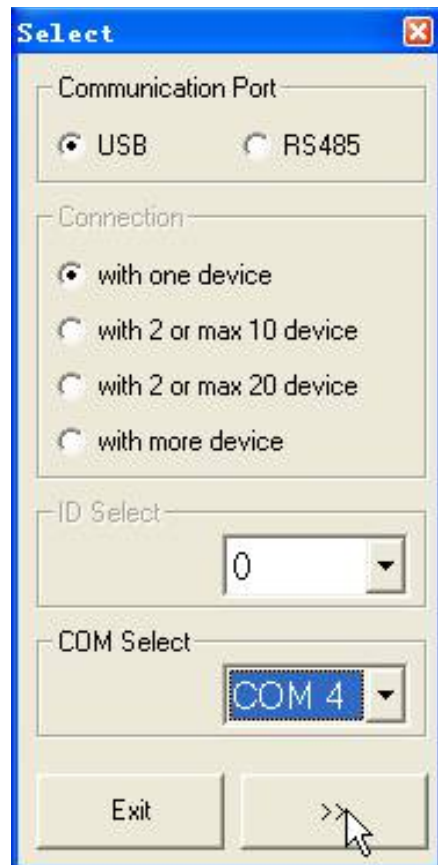


Picture 5

3. Start the PC remote control software, choose the port which corresponds to the PC setting “USB Serial Port (COM\*\*)” (eg, picture 6), then click “>>” (eg, Picture 7) then press enter to connect to the PC software (some devices will connect automatically).



Picture 6



Picture 7