



MAKERS OF THE ORIGINAL  
HOT SPOT PERSONAL MONITOR



[www.galaxyaudio.com](http://www.galaxyaudio.com)

## **ONE YEAR LIMITED WARRANTY**

WARRANTY Information can be viewed online at  
<http://www.galaxyaudio.com/warranty.php>



[www.galaxyaudio.com/warranty.php](http://www.galaxyaudio.com/warranty.php)

# **CH-CC215**

## **USER'S MANUAL**

Specifications in this manual are subject to change without notice.  
For the most up to date manual and information  
visit [www.galaxyaudio.com](http://www.galaxyaudio.com).

1-800-369-7768 [www.galaxyaudio.com](http://www.galaxyaudio.com)

© Copyright Galaxy Audio 2014

V20141022

# **CH-CC215**

## **USER'S MANUAL**

## **PROFESSIONAL CHOIR MICROPHONE**



MAKERS OF THE ORIGINAL  
HOT SPOT PERSONAL MONITOR

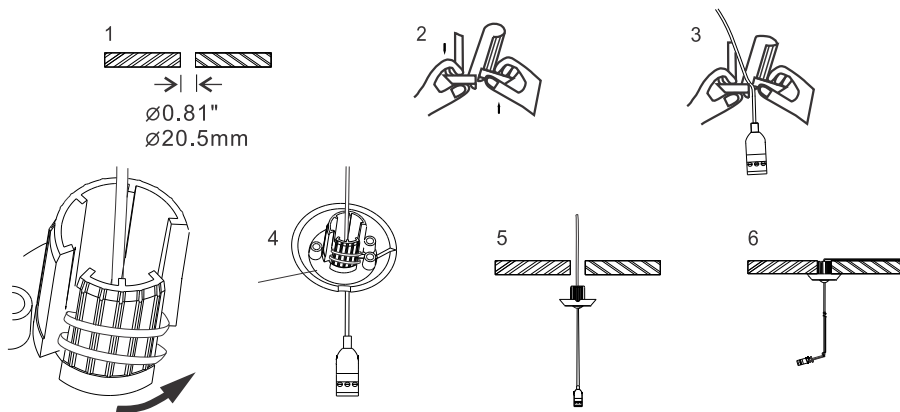
The CH-CC215 is a wide-range miniature condenser microphone with a cardioid polar pattern. It has been designed for use in high-quality sound reinforcement, professional recording, television, and other demanding audio applications. The microphone is furnished with a steel hanger that allows it to be positioned inconspicuously over a choir, orchestra, stage, etc.

The combination of small size and excellent response makes the CH-CC215 ideal for choirs, instrumental groups, and theater stages. A uniform 120° pickup angle provides well-balanced audio.

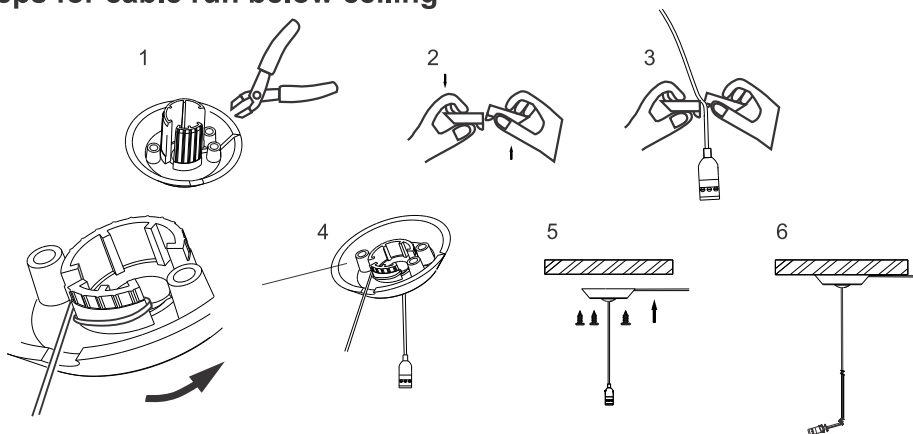
It can be powered from an external 9V to 52V DC phantom power supply. Output is low impedance balanced. The balanced signal appears across pins 2 and 3 of the professional 3-pin XLR output connector, while the shield/ground connection is pin 1.

A specially designed plastic mounting disc is provided for easy installation. The Microphone Cable may be run above or below the ceiling. See the diagram below:

### Steps for cable run above ceiling



### Steps for cable run below ceiling



### SPECIFICATIONS:

**Element:** Back Electret Condenser

**Polar Pattern:** Cardioid

**Frequency Response:** 30Hz –18KHz

**Sensitivity:** -63dB/microbar

**Impedance:** 250 ohms

**Maximum Input SPL:** 145dB SPL, 1KHz at 1% T.H.D

**Dynamic Range:** 118dB, 1KHz at Max. SPL

**Signal to Noise Ratio:** 67dB, 1KHz at 1 Pa

**Phantom Power Requirements:** 9V -52V DC, 2.0mA typical

**Output Connector:** Integral 3-pin XLR (male)

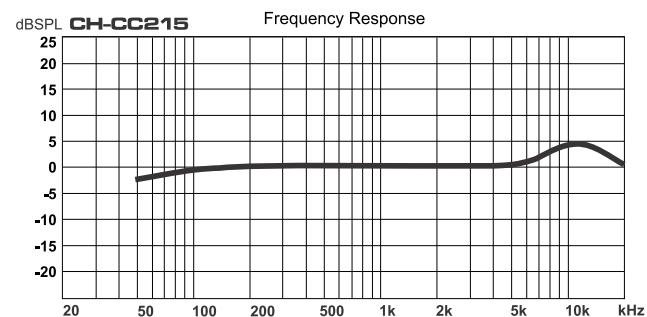
**Colors:** Black or White

**Accessories:** Plastic Mounting Disc, Steel Hanger

**Cable Length:** 30' or 60' (9.14m or 18.29m)

**Dimensions:** 0.5" x 1.1" (12.7mm x 27.94mm)

### CH-CC215



### Polar Pattern

